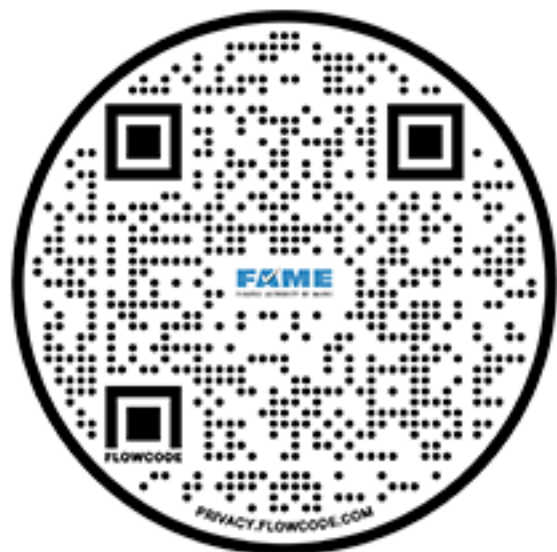


While you wait...

Join our mailing list:

FAMEmaine.com/join



Connect with Us



FAMEmaineorg



FAME.maine



FAMEmaine



FAMEMaine



@FAMEmaine



FAME's Summer Training Pell and Parents and Pathways – Oh My!

August 15, 2023

PRESENTED BY

Mila Tappan, Manager of College Access and Outreach

Here's what we're going to discuss!

- Expanded **Pell** Grant Eligibility and Transparency
- **Parent** and Family Information Changes
- **Pathways** for Students with Unusual Circumstances or Homeless Youth



Expanded Pell Grant Eligibility and Transparency

Three Pathways to Pell Grant Eligibility

Pell Eligibility has been expanded!

Three Ways to Determine Pell Grant Eligibility:

*Maximum
Pell Grant*

*Calculated
Pell Grant*

*Minimum
Pell Grant*



Today's Pell Grant Focus

For today.....

- I'm going to focus on the criteria for Dependent Students.
- Similar criteria exists for Independent Students.
- We'll share a resource with all the criteria as a follow up to this training.

Criteria for a Maximum Pell Grant

Parent not required to file federal income tax return

OR

Single parent with AGI > 0 and $< 225\%$ of poverty guideline for family size

OR

Parent NOT single parent and has AGI > 0 and $< 175\%$ of poverty guideline for family size

OR

Student's (under 33) parent died serving in armed forces after 9/11/01 or in line of duty as a public safety officer

Criteria for a **Calculated Pell Grant**

Students not eligible for an automatic Max Pell Grant may be eligible for a calculated Pell Grant

Calculated Pell Grant = Max Pell Grant minus Student Aid Index (SAI)

Example:

Max Pell = \$7,395 (may change for 2024-2025)

SAI = 1,005

Calculated Pell = \$7,395 - 1,005 = \$6,390

Criteria for a Minimum Pell Grant

Student's parent is a single parent with an AGI \leq 325% of poverty guideline for family size

OR

Student's parent is NOT a single parent and has an AGI \leq 275% of poverty guideline for family size

Minimum Pell Grant = 10% of Max Pell Grant

For example, if the Maximum Pell Grant is \$7,500, Minimum Pell Grant would be \$750

Pell Grant Transparency and Early Awareness

Early Awareness – Pell Look Up Tables!

Ability for students and families to determine if student eligible for a maximum or minimum Pell Grant before a FAFSA is filed.

Example: Dependent Student's Parent is Single

Student's Parent is a Single Parent			
Family Size	2022 Poverty Guideline	★ Max Pell Parent AGI Limit (225% of Poverty Guideline)	★ Min Pell Parent AGI Limit (325% of Poverty Guideline)
2	\$18,310	\$41,198	\$59,508
3	\$23,030	—————→ \$51,818	—————→ \$74,848
4	\$27,750	\$62,438	\$90,188
5	\$32,470	\$73,058	\$105,528
6	\$37,190	\$83,678	\$120,868
7	\$41,910	\$94,298	\$136,208
8	\$46,630	\$104,918	\$151,548
9+	Add \$4,720 to the poverty guideline for each additional person. Then multiply the AGI by 225% (Max Pell) or 325% (Min Pell) to determine the Parent AGI Limit.		

Pell Grant Transparency and Early Awareness

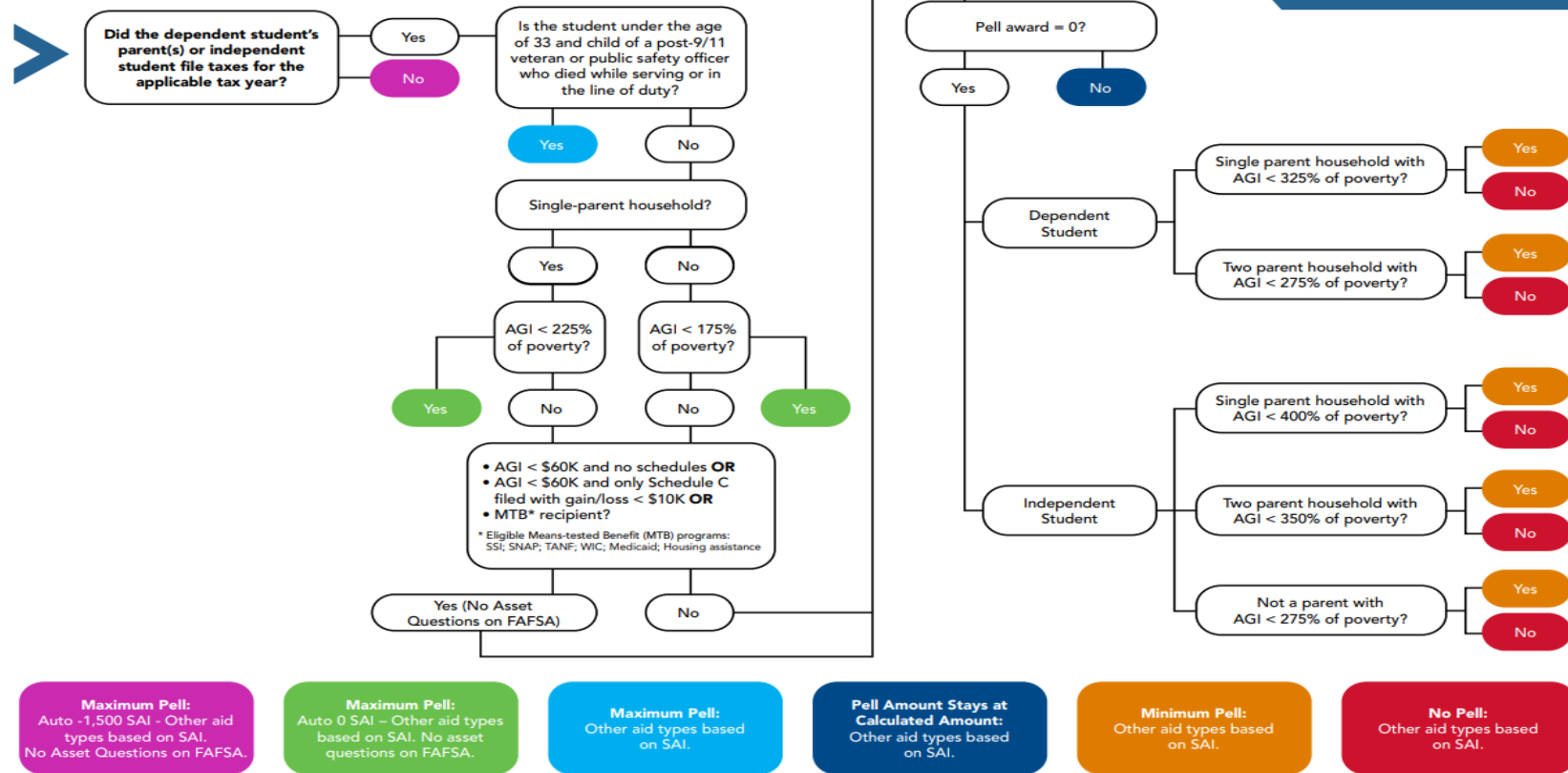
Example: Dependent Student's Parent is **not** a Single Parent

Student's Parent is not a Single Parent			
Family Size	2022 Poverty Guideline	★ Max Pell Parent AGI Limit (175% of Poverty Guideline)	★ Min Pell Parent AGI Limit (275% of Poverty Guideline)
2	\$18,310	\$32,043	\$50,353
3	\$23,030	\$40,303	\$63,333
4	\$27,750	—————→ \$48,563	—————→ \$76,313
5	\$32,470	\$56,823	\$89,293
6	\$37,190	\$65,083	\$102,273
7	\$41,910	\$73,343	\$115,253
8	\$46,630	\$81,603	\$128,233
9+	Add \$4,720 to the poverty guideline for each additional person. Then multiply the AGI by 175% (Max Pell) or 275% (Min Pell) to determine the Parent AGI Limit.		

Pell Look Up Tables (including for Independent Students) can be found here:
[2024-25 DRAFT SAI Guide - Eligibility for Max-or-Min Pell Grant Resource \(ed.gov\)](#)

FEDERAL METHODOLOGY STUDENT AID ELIGIBILITY DETERMINATION EFFECTIVE 2024-25 FAFSA

This tool is intended to help FAAs visualize how eligibility for Pell grants and other aid will be determined under the provisions of the 2021 Consolidated Appropriations Act. This is not a representation of the applicant experience or actual FAFSA questions.







Parent and Family Information Changes

New Definition - Parent on the FAFSA

- Starting with the 2024-2025 FAFSA, the **parent who provides the greater portion of the student's financial support** will be responsible for completing the FAFSA.
- If this parent is **married as of the date the FAFSA is filed**, the parent's spouse's information is required as well. This isn't new but often a concern.

Family Size (was Household Size)

- Dependents include qualifying children and qualifying relatives as **defined by the IRS**.
- Family size will be **transferred from tax return** into the FTI module but will **not be visible in the FAFSA**.
- Individuals will be able to update family size.
- Helpful to have tax return so they will know whether number need to be updated.

Multiple Children in College

- The **parent SAI will no longer be divided by number of children in college** at the same time
 - The question will remain on the FAFSA, and schools can use that information when awarding institutional aid.
- **Why was it removed?** The calculation for maximum and minimum Pell is based on poverty guidelines which don't take into account the number in college.
 - Theoretically offset by an increase income protection allowance, but the state and local tax allowance is gone.





Pathways for Students with Unusual Circumstances or Homeless Youth

Professional Judgment (PJ)

Guidance provided on November 4, 2022, defined two categories of professional judgment:

Special Circumstances

refer to changes in financial situations that justify an aid administrator adjusting **data elements**

- Recent unemployment
- Unusual expenses
- Divorce/separation

Unusual Circumstances

refer to the conditions that justify an aid administrator making a **dependency override** based on a unique situation

- Parental abandonment
- Abuse
- Parent incarceration



Professional Judgement – Guidance starting with the 2023-2024 Award Year

Assisting Students with Unusual Circumstances

- Definition of acceptable documentation has been expanded for student with unusual circumstances (dependency override) and is **applicable starting with the 2023-2024 award year**:
- **Acceptable documentation may include** (these are just a few):
 - A **documented interview** between student and financial aid administrator;
 - A documented phone call or written statement from a representative of a **TRIO program** that confirms the circumstances and person's relationship to the student;
 - A documented determination of independence made by a **financial aid administrator at another school** in the same or prior award year; or
 - A documented phone call or written statement with a **state, country, or tribal welfare agency**.

Assisting Students with Unusual Circumstances

- Adjustments for unusual circumstances (dependency overrides) will **carry forward** for each subsequent year at the same school unless:
 - the student informs school that circumstances have changes; or
 - the school has conflicting information about the student's independence.
- Schools must make a determination of a student's dependency status and provide a financial aid offer in a **timely manner** (60 days).

For additional information see Dear Colleague Letter (Gen-22-15):

<https://fsapartners.ed.gov/knowledge-center/library/dear-colleague-letters/2022-11-03/fafsar-simplification-act-changes-implementation-2023-24>



Provisional Independence – New for the 2024-2025 FAFSA

Provisional Independence

- **New process** for students with unusual circumstances who cannot provide parent information on the FAFSA.
- Students will be **allowed to complete the FAFSA as independent** students (submit w/o parent information).
- **SAI to be calculated** and student will receive an estimate of their Federal Pell Grant eligibility
- Final determination subject to approval of **documentation** submitted to their school.

Provisional Independence – New for the 2024-2025 FAFSA

FAFSA® FORM 2024-25 Parent of Raya Tran Save FAFSA Menu

1 Personal Circumstances 2 Demographics 3 Financials 4 Colleges 5 Signature

Student Unusual Circumstances

This information will help us evaluate the student's ability to pay for school.

Do unusual circumstances prevent the student from contacting their parents or would contacting their parents pose a risk to the student?

A student may be experiencing unusual circumstances if they

- left home due to an abusive or threatening environment;
- are abandoned by or estranged from their parents and have not been adopted;
- have refugee or asylee status and are separated from their parents, or their parents are displaced in a foreign country;
- are a victim of human trafficking;
- are incarcerated, or their parents are incarcerated and contact with the parents would pose a risk to the student; or
- are otherwise unable to contact or locate their parents and have not been adopted.

If the student's circumstances resulted in not having a safe and stable place to live, they may be considered a homeless youth and should review the answer to the previous question about being unaccompanied and homeless.

☒ Yes ☐ No

Previous Continue



Professional Judgement – Unaccompanied Homeless Youth

Assisting Unaccompanied Homeless Youth




To be considered an unaccompanied homeless youth on the FAFSA, an individual must be a youth who is:

- unaccompanied **and** homeless youth **or**
- unaccompanied, self-supporting **and** at risk of being homeless.

Assisting Unaccompanied Homeless Youth

- Financial Aid Administrators (FAA) **are required** to consider documentation from the following eligible authorities **sufficient**:
 - a local educational agency **homeless liaison**;
 - the director or designee of an **emergency or transitional shelter**, homeless youth drop-in center or other program serving individuals who are experiencing homelessness;
 - the director or designee of a **TRIO** or GEAR UP grant; or
 - an **FAA at another institution** who documented the student's circumstances in the same or prior award year.
- If the student has received a documented determinations from one of these authorities, the **school must not request additional documentation, proof, or statements** unless it has conflicting information.

Unaccompanied Homeless Youth

FAFSA[®] FORM 2024-25  Parent  Save  FAFSA Menu

1

Personal Circumstances

2

Demographics

3

Financials

4

Colleges

5

Signature

Student Other Circumstances

At any time on or after July 1, 2023, was the student unaccompanied and either (1) homeless or (2) self-supporting and at risk of being homeless?

☒ Yes

☐ No

Did any of the following determine the student was homeless or at risk of becoming homeless?

Select all that apply.

☐ Director or designee of an emergency or transitional shelter, street outreach program, homeless youth drop-in center, or other program serving those experiencing homelessness

☐ The student's high school or school district homeless liaison or designee

☐ Director or designee of a project supported by a federal TRIO or GEAR UP program grant

☐ Financial aid administrator (FAA)

☒ None of these apply.

PreviousContinue

Assisting Unaccompanied Homeless Youth

- If student is unable to provide documentation, FAFSA pathway is the same as for Provisional Independent Status students.
- FAA must make the determination as to whether student is an unaccompanied homeless youth.
- Decisions must be:
 - Based on a **written statement from**, or **documented interview** with the student that confirms that they are an unaccompanied homeless youth, or unaccompanied, at risk of homelessness, and self-supporting; and
 - Made **without regard to the reasons** that the student is unaccompanied and/or homeless.

Assisting Unaccompanied Homeless Youth

As with unusual circumstances, these determinations carry forward to the next year unless:

- the school has conflicting information; or
- the student informs the school that their circumstances have changed.

For additional information see Dear Colleague Letter (Gen-23-06):
<https://fsapartners.ed.gov/knowledge-center/library/dear-colleague-letters/2023-04-14/unaccompanied-homeless-youth-determinations-update>





Thank you for joining us today!

Find more FREE resources and information at
FAMEmaine.com/education.

Follow Us:



Contact Us: **Education@FAMEmaine.com**

PH: 207-623-3263 or 800-228-3734

TTY: 207-626-2717